



全方位触控解决方案提供商

TouchWo
触控·人机交互系统

Capacitive All In One PC

55 inches Capacitive Touch Panel

Technical Specification

Model:TD55-A01

Product Introduction



NOTE: Standard layout is wall mount, and the desktop bracket is optional.

Version V1.72

We apologize that if something is changed without notice.

<http://touchwo.en.alibaba.com/>



I. Introduction

The capacitive touchscreen all-in-one PC is the most convenient, simple, natural, practical interactive device, which gathers the strengths of touch technology, computer technology, multimedia technology, audio technology, network technology, industrial plastic arts, mechanical manufacturing technology, streamlined integration of design, etc., with a pure flat product structure, together with the excellent performance of touch experience and fast completion of information query and display, really easy to use interactive features.

Touchwo technology "TouchWo" brand capacitive all-in-one pc has been widely used in many occasions, such as car showroom, brand monopoly, hotel lobby, fairs, company showrooms, supermarkets, banks, government units and so on. We have focused on research and development production of touch products for many years, so that our products are more competitive than counterparts in both technology and practical applications.

II、Product Characteristic

1. Structure Design:

- (1) Pure flat structure, ergonomic design, slim and beautiful, streamlined shape, sophisticated technology;
- (2) Display, touch, PC system integration slim design;

2. Effect:

- (1) Using the newly developed projected capacitive screen, supports 10 point touch, handwriting and multi-point gesture;
- (2) Touch speed is less than 3ms, good accuracy, ease of use and easy to maintain;
- (3) Anti-light interference, to ensure the accuracy of operation (can be used as usual under bright light);

3. Good scalability: Flexible configuration, can expand the installation of customer demand for a variety of functional accessories;

4. High safety: Aluminum alloy + sheet metal structure, no sharp edges, wear resistant and anti-corrosive paint process, overall explosion-proof design design;



5. Stable performance: advanced design ideas, strict production process, stable and reliable product quality, low failure rate;
6. Simple installation: power a key switch, dispense with on-site installation and commissioning.

III、Applications

- Public places: subways, airports, bookstores, parks, exhibition halls, stadiums, museums, convention centers, ticket agents, talent market, lottery centers, hospitals, schools, telecommunications, post offices and so on;
- Entertainments: cinemas, gyms, holiday resorts, clubs, foot sauna, bars, cafes, beauty salons, golf courses and so on;
- Financial institutions: banks, securities, funds, insurance companies, pawn shops and the like;
- Commercial organization: shopping malls, chain stores, supermarkets, speciality stores, hotels, restaurants, travel agencies, pharmacies, etc;
- Properties: apartments, villas, offices, commercial buildings, model houses, sales offices and so on.

IV、Product Specifications

1、Touch screen parameters	
Touch screen type	Projected capacity touch screen
Response time	< 5ms
Touch points	Standard 10-point touch, Zooming in/out pictures by multi-point
Touch recognition	> 1.5mm(Finger, touch pen opaque objects)
Scanning rate	200 Hz
Scanning accuracy	4096×4096
Communication	Full-Speed USB 2.0, 3.0
Theory Clicks	More than 50 million times
Operating current / voltage	180Ma/DC+5V±5%
Anti-light interference	Sunlight, incandescent, fluorescent and other light during normal use change
Touch data output	Coordinate output
Surface hardness	Physical steel Mohs 7 explosion-proof glass



Operating System Compatibility	Win 7/ Win 8 / Win 10 / XP / Linux /MAC /Android
Drive	Free drive, plug and play
2、LED screen parameters	
Screen Type	LED back-light, A-type
Size	55 inches (16:9)
Active Area (Display device)	1209.6 (H) * 680.4mm (V)
Resolution	1920*1080 P (4k optional)
Brightness	≥ 350 cd/m ²
Contrast ratio	≥ 1000: 1
Response time	< 6 ms
Number of colors	16.7M (8-bit 2 (LVDS) (Channel low-voltage differential signal)
Refresh rate	60Hz
Viewing angle	89/89/89/89 (Typ.)(CR≥10)(left/right/up/down)
Life time	> 50000 hours
3、Display parameters (as a touch display only partially used)	
Power Interface	12V
Comb filter	3D COMB filter
VGA input(15-pin D-Sub)	1
High-definition multimedia interface (HDMI)	1
DVI Interface	1
Number of loudspeakers	2
4、Power supply parameters	
Input Power	110—240V AC 50/60Hz
Output power	12V 5A
Overall power consumption	< 280W
Standby power consumption	< 3W
5、Working environment	
Operating temperature	0℃-38℃
Working humidity	0% - 90%
Storage temperature	-40℃-85℃
Storage humidity	10% - 95%
6、Standard Accessories	
Instructions	Electronic file specification
Power line	1 pc



Wall mount	1 set
Warranty Card	1 set
Certificate	1 set
WIFI	1 pc

V、Computer system (double system optional)

Project	Touchscreen Monitor	Android	X86 Elite Version (OPS)	X86 version	Luxury (OPS)	H81 Premium version (OPS)
Chip	Same as display parameters	MSTAR 828 /Octa core RK3368	Industrial motherboard Intel Celeron Quad core J1900	Industrial motherboard Intel (I3,I5,I7 optional)		H81 motherboard, with dependent CPU Intel (I3,I5,I7 optional)
Ram		2G	DDR3:2G/4G/8G			
Hard Disk		Flash 8G, scalable	HDD:500G/1T SSD:32G/64G/128G/256G			
Graphics		Android HD	Core Graphics			
Definition		720P/1080P				
Operating System		Android 5.1. Kernel version 3.0.28	Standard Windows 10 64BIT, Windows 7 optional			
NIC	Integrated 10/100 / 1000M adaptive network card, wireless network card 802.11a / b / g / n					
Input Power	110-240V AC 50/60Hz					

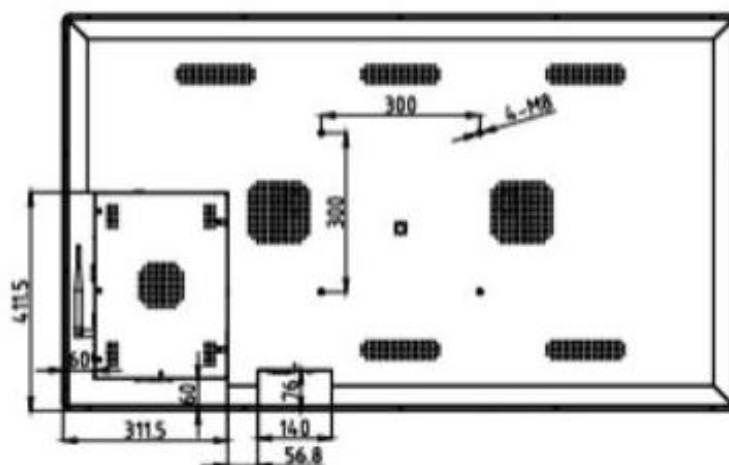
VI、size

Inch	55" (Diagonal 1393.28mm)
display size	1214 * 684.5mm (16: 9)
Machine size (width * height * thickness)	1276.6 (W) * 747.4 (H) * 67.5 (T) mm
Package size (width * height * thickness)	1463 (W) * 924 (H) * 232 (T) mm
Mounting bracket	Standard wall rack (1.9kg) , or desktop base
The back wall with holes for connection machine (length * width)	300×300 mm
Wall screw specifications	M8
Net weight	Touch monitor 43.9 kg all-in-one PC 44.4 kg

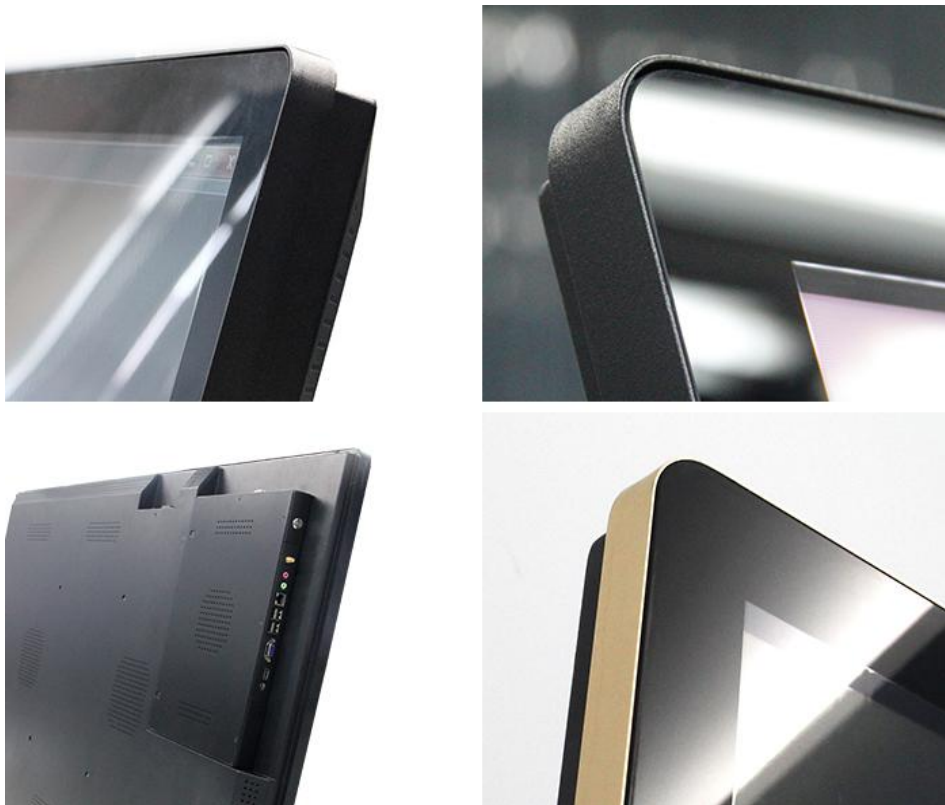


TouchWo
触沃·人机交互系统

57.8 kg



<http://touchwo.en.alibaba.com/>



IX、Product design / product effect diagram

Black+gold

black panel and rear shell, golden border



All black

black panel, border and back shell

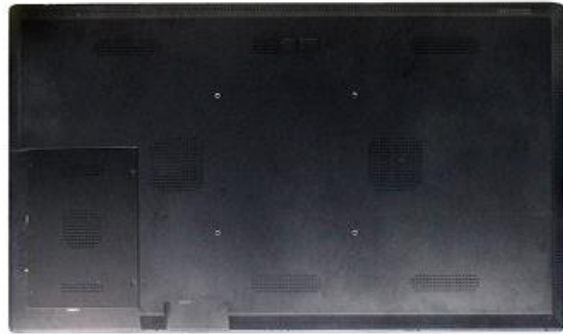


Color customized, please consult our sales before purchase.

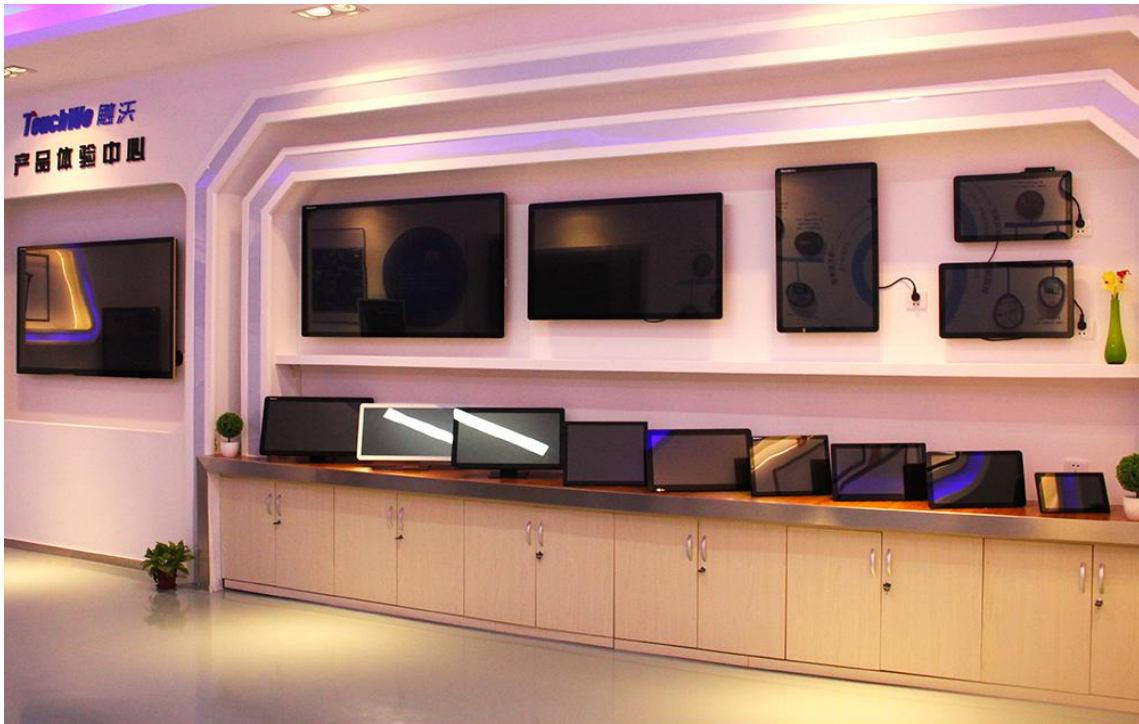


全方位触控解决方案提供商

TouchWo
触控·人机交互系统



X、The real figure



XI、Product accessories



Power line&Wifi antenna



Product Specification



Warranty Card



Wall bracket



Simple desktop bracket



Embedded bracket

standard configuration:
Wall bracke/Simple desktop
/Embedded bracket
(choose one in three)
The other 2 stlyes for sell.



Desktop folding bracket



Desktop base



XII、Product Ports

Touch Monitor



Windows OS



2 com ports can be added

Android OS

